

RECEIVED-ENTERED

M

COUNTY of DUKES COUNTY

REGISTRY OF DEEDS

JUN 5 - 1961

PHILIP J. NORTON,

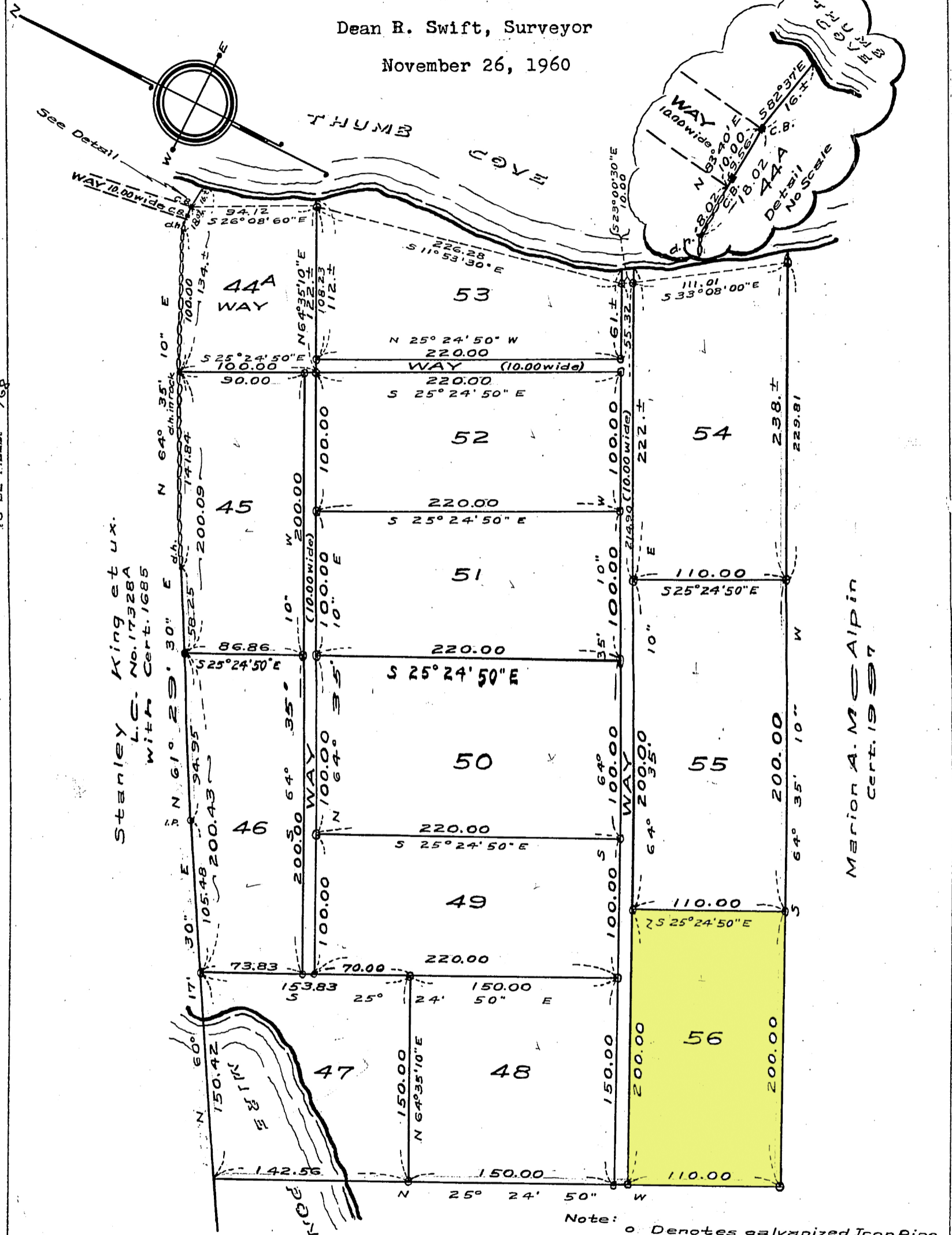
REGISTER

SUBDIVISION PLAN OF LAND IN CHILMARK

Dean R. Swift, Surveyor

November 26, 1960

17252^D



SUBDIVISION PLAN
 NO. 17252-F
 SHOWING CHANGES
 TO BE FILED 5/2/68

Stanley King et ux.
 L.C. No. 17328A
 with Cert. 1685

Marion A. McAlpin
 Cert. 1997

Note: o Denotes galvanized Iron Pipe unless otherwise specified

Subdivision of Part of Lot 1
 Shown on Plan 17252^A Sheet 1
 Filed with Cert. of Title No. 1997
 Registry District of Dukes County

Separate certificates of title may be issued for land shown hereon as Lot 44A & Lots 45-56 Incl. By the Court.

Copy of part of plan filed in
LAND REGISTRATION OFFICE
 FEB. 10, 1961
 Scale of this plan 80 feet to an inch
 C.M. Anderson, Engineer for Court

FEB. 27, 1961

Magnum Daly
 Recorder