

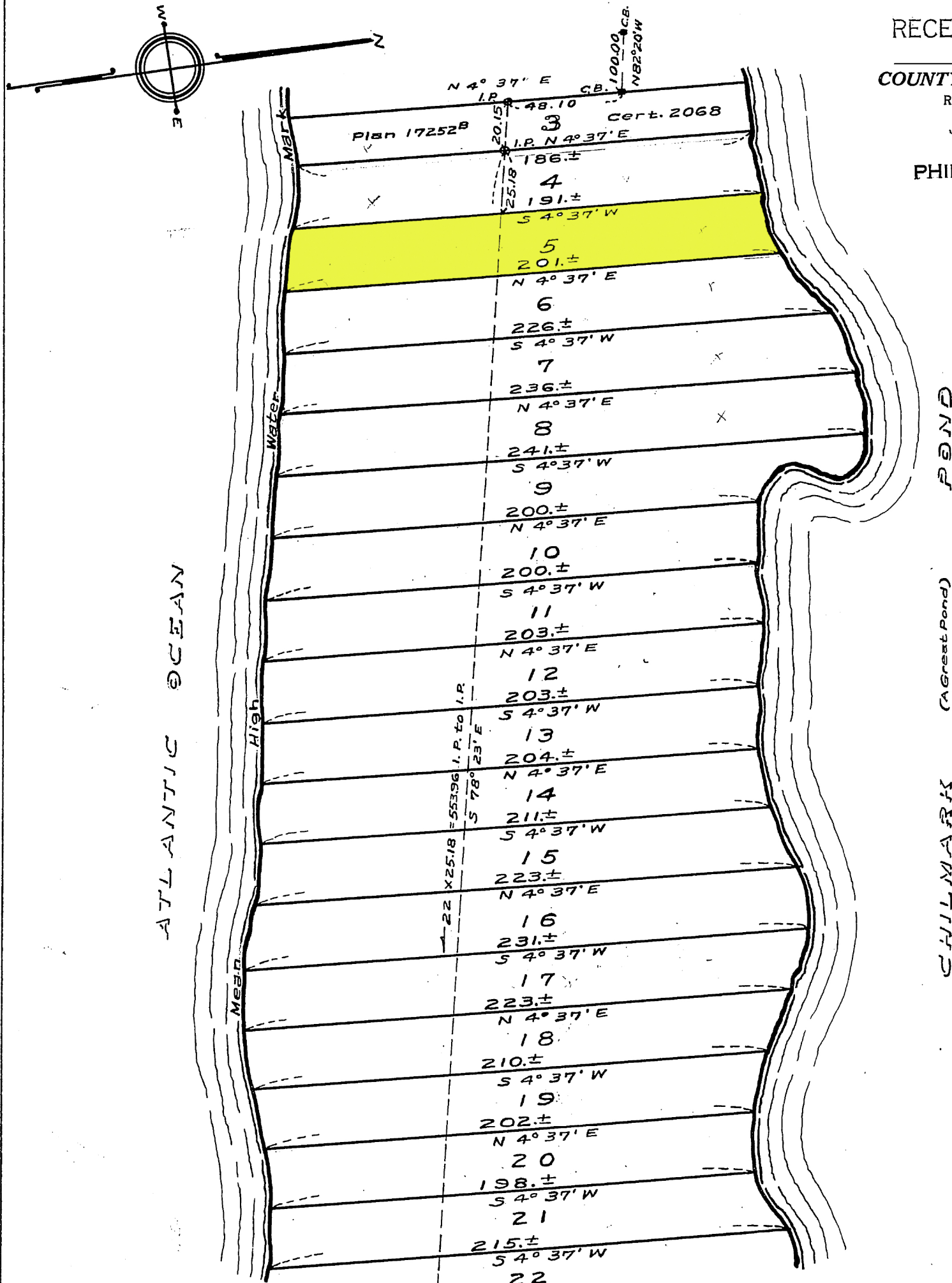
SUBDIVISION PLAN OF LAND IN CHILMARK

William F. Swift, Surveyor

January 1959

17252^C
SHEET 1

RECEIVED-ENTERED
M
COUNTY of DUKES COUNTY
REGISTRY OF DEEDS
JUN 5 - 1961
PHILIP J. NORTH
REG



See Sheet 2
Subdivision of Part of Lot 2
Shown on Plan 17252^A Sheet 2
Filed with Cert. of Title No. 1997
Registry District of Dukes County

Separate certificates of title may be issued for land shown hereon and Sheet 2 as Lots 4-43 Incl. By the Court.

Margaret M. Daly
Recorder.

FEB. 27, 1961

Copy of part of plan 17252^C
filed in
LAND REGISTRATION OFFICE
MARCH 27, 1959
Scale of this plan 50 feet to an inch
C.M. Anderson, Engineer for Court 1/2

12/27/3