

Assr.-Pcl. 31-70.23
"N/F Kathryn Ham, Trustee"

Assr.-Pcl. 31-70.2
"N/F Thomas Wetherall, Trustee"

Assr.-Pcl. 31-103
"N/F Carol Christensen"

Assr.-Pcl. 31-102.3
"N/F Tara Whiting"

Assr.-Pcl. 31-102.11
"N/F Jaka & Gad Saarony"

Assr.-Pcl. 31-102.1
"N/F Jessica Leigh Stone"

North Vine Lane

Assr.-Pcl. 31-70.22
"N/F 21 North Vine LLC"

Assr.-Pcl. 31-70.11
"N/F 44 South Vine LLC"

Assr.-Pcl. 31-70.12
"N/F Kevin & Maria McFarland, Trustee"

#25 North Vine Lane
Assr.-Pcl. 31-70.3
Area = ±3.83 Acres

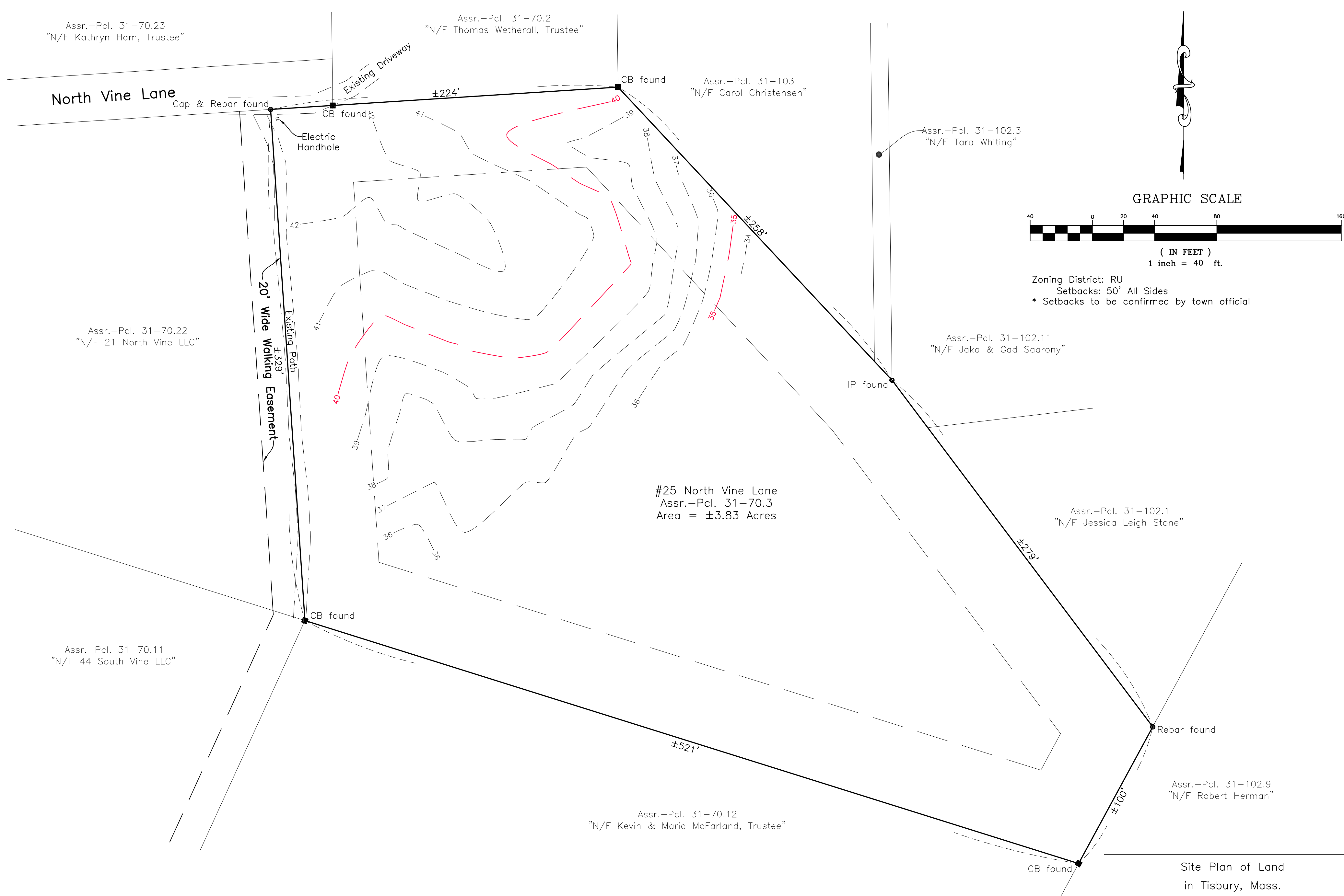


GRAPHIC SCALE



(IN FEET)
1 inch = 40 ft.

Zoning District: RU
Setbacks: 50' All Sides
* Setbacks to be confirmed by town official



Site Plan of Land
in Tisbury, Mass.
Prepared for
Katrina Sutcliffe

Scale: 1"=40' May 16, 2024

VINEYARD LAND SURVEYING & ENGINEERING

12 Courmoyer Road
P.O. Box 421
West Tisbury, MA 02575
P 508-693-3774 F 508-629-0440
VLSE.net